



Implementing HP MSM Wireless Networks

Exam description

This exam tests your implementation skills and knowledge for HP MSM Wireless Networks. You will be tested on topics such as wireless standards, wireless security, guest access, controller high availability and roaming.

Who should take this exam?

Candidates with “on the job” experience. The associated training course, which includes numerous design activities, provides a foundation, but you are expected to have experience in the real world as well.

Exam contents

This exam has 55 questions. Here are types of questions to expect:

- Matching
- Multiple choice (multiple responses)
- Multiple choice (single response)
- Scenarios with multiple questions

Tips for taking this exam

Rather than emphasize simple memorization, HP exams attempt to assess whether you have the knowledge and skills that an IT professional requires on the job. Therefore, some exam items present a scenario, which outlines a particular network environment or problem. Some exam items might also include one or more exhibits. Exhibits can be for example:

- Network topologies
- Abstracts of switch configuration file output
- Commands and command output This ExpertOne exam presents all the questions in a single block. The candidate agreement is presented first, followed by the exam introduction and instructions. Once you click the Next Question button on the instructions page, the questions will be presented one at a time. You can move from question to question, skip questions, and change your answers. However, once you submit your answers, you cannot return to review those questions or change your answers. Here are some additional tips:
- Use the Next Question / Previous Question buttons to move forward and backward between questions. The Submit button will appear when you reach the last question.
- Use the Assessment Navigator to jump between questions in a block and to review flagged questions. To do this, click the Assessment Navigator button and select the question you want to navigate to. Flagged questions are indicated above the item number in the upper left corner. The Assessment Navigator also uses different shading to indicate answered versus unanswered items.
- Use the Assessment Navigator to launch the calculator tool by clicking the Calculator button at the bottom. When you begin the exam the total number of questions will display. To estimate how much time you should allow per question, divide the total time by the number of questions. For this exam, you will have an average of just less than two minutes per question. Some questions are more complex and will require more time. You might want to answer the questions you know first. If a question is taking too much time, flag it using the Assessment Navigator, and then return to it later.

When you begin the exam the total number of questions will display. To estimate how much time you should allow per question, divide the total

Exam ID	HP2-Z32
Exam type	Web-Based online exam used in certifications
Exam duration	1 hour 45 minutes
Exam length	55 questions
Passing score	67%
Delivery languages	English
Related certifications	<ul style="list-style-type: none"> • HP ASE - FlexNetwork Integrator V1 • HP ASE - FlexNetwork Architect V2 • HP ASE - Wireless Networks Implementer V1 • HP ASE - FlexNetwork Integrator V1 - upgrade from HP ASE - Network Architect V1, HP ASE - Wireless Networks [2011] or HP ASE - Network Infrastructure [2011] • HP ASE - Wireless Networks Implementer V1 - upgrade from Cisco, H3CSE, and ASE previous versions • HP ASE - Wireless Networks Implementer V1 - upgrade from HP ASE - Wireless Networks [2011] and HP ASE - Network Infrastructure [2011] • HP ASE - FlexNetwork Integrator V1 - upgrade from Cisco - CCIE • HP ASE - FlexNetwork Integrator V1 - upgrade from Cisco, H3CSE or Juniper • HP ASE - FlexNetwork Architect V2 - upgrade from HP ASE - Network Infrastructure [2011] or HP ASE - Wireless Networks [2011] • HP Master ASE - Wireless Networks Implementer V1 - upgrade from HP Master ASE - Network Infrastructure [2011]/Master ASE - HP ProCurve Campus LANs [2010] • HP ASE - Wireless Networks Implementer V1 - upgrade from HP Enterprise Networking Products Technical Qualification [2010] and HP APP - Enterprise Networking [2011] (inactive) • HP ASE - FlexNetwork Architect V2 - upgrade from Cisco, H3CSE or Juniper • HP ASE - FlexNetwork Architect V2 - upgrade from HP ASE - Network Architect V1
Supporting courses	<p>These recommended courses help you prepare for the exam</p> <ul style="list-style-type: none"> • 00886659 - Implementing HP MSM Wireless Networks, Rev. 14.21
Additional study materials	<ul style="list-style-type: none"> • 00243299 - HP Wireless LAN Technologies, Rev. 10.41 (WBT)

Register for this Exam

You will need an [HP Learner ID](#) and a Pearson VUE login and password.

During the exam, you can make specific comments about the exam and items. HP welcomes these comments as part of our continuous improvement process.

time by the number of questions. For this exam, you will have an average of just less than two minutes per question. Some questions are more complex and will require more time. You might want to answer the questions you know first. If a question is taking too much time, flag it using the Assessment Navigator, and then return to it later.

Take the time to read the entire question and consider all of the options carefully before you answer. If the question indicates that it features an exhibit, study the exhibit and reread the question. Make sure to select the answer that correctly responds to the question that is asked — not simply an answer that includes some correct information. If the question asks for more than one answer, remember to select each correct answer. You will not receive partial credit for a partially correct answer.

Objectives

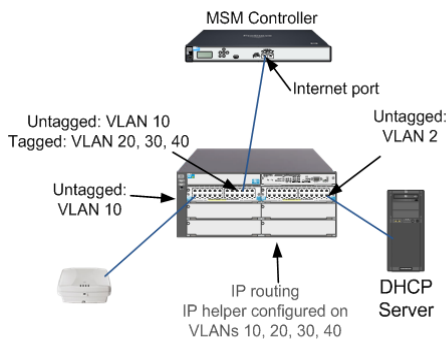
This exam validates that you can successfully perform the following:

	Sections/Objectives
30%	Fundamental wireless networking architectures and technologies <ul style="list-style-type: none">Describe wireless media and standards.Describe wireless security options.
7%	HP MSM Wireless Networking products, solutions, and service offerings <ul style="list-style-type: none">Determine appropriate HP MSM products and licenses for specific environments and requirements.
8%	HP MSM Wireless networking solution planning and design <ul style="list-style-type: none">Design an HP MSM solution.
40%	HP MSM Wireless Networking solution implementation (install, configure, startup, and upgrade per planned design) <ul style="list-style-type: none">Install, configure, and manage the wireless network solution as per planned design.
15%	HP MSM Wireless solution enhancement (performance-tune and optimize) <ul style="list-style-type: none">Optimize Layer 2 and Layer 3 infrastructures via broadcast domain reduction and VLANs, and Layer 3 via OSPF.Manage network assets using HP tools.Verify L3 routing protocol convergence and scalability.

Sample questions

Use the following questions to help assess whether you are ready to take the exam. Answers to these sample questions are provided at the end of this guide.

1. You have enabled the Use Controller for Access Control feature on a Virtual Service Community (VSC) on a standalone HP MSM765 zl Mobility Controller. The VSC is also set to always tunnel traffic. How do clients that connect to this VSC receive IP addresses, and what role does the controller take in the solution?
 - a. Clients must receive IP addresses from a network DHCP server, and the controller is not involved in the DHCP processes.
 - b. Clients can receive IP addresses from a network DHCP server or the controller's internal DHCP server, and you must configure DHCP services or relay services on the controller.
 - c. Clients must receive IP addresses from a network DHCP server, and you must configure DHCP relay services on the controller.
 - d. Clients must receive IP addresses from the controller internal DHCP server, which is configured on the controller.
2. Refer to the exhibit.



MSM APs

The HP MSM760 Access Controller shown in the exhibit is operating at its default discovery settings. Which action must you take to enable the controller to discover the AP shown in the exhibit?

- a. Enable AP discovery globally on the controller.
 - b. Enable Layer 3 discovery on the controller and configure the correct option on your DHCP server.
 - c. Enable discovery on the controller's Internet port.
 - d. Configure VLANs on the controller to match the VLANs on the switch port.
3. You have enabled the Use Controller for Access Control feature on a VSC on a team of HP MSM765 zL Mobility Controllers. The VSC is also set to always tunnel traffic. How do clients that connect to this VSC receive IP addresses, and what role do the controllers take in the solution?
- a. Clients must receive IP addresses from a network DHCP server, and the team is not involved in the DHCP processes.
 - b. Clients can receive IP addresses from a network DHCP server or the controller's internal DHCP server, and you must configure DHCP services or relay services on the team.
 - c. Clients must receive IP addresses from a network DHCP server, and you must configure DHCP relay services on the team.
 - d. Clients must receive IP addresses from controller's internal DHCP servers, which are configured on the team.

4. Match the description below to the appropriate HP MSM Controller;

- Ships with a Premium Mobility license

- a. MSM760 Controller
- b. MSM765 zL Controller
- c. MSM720 Controller

5. Match the description below to the appropriate HP MSM Controller;

- Offers multiple ports that can be configured in aggregated links

- a. MSM760 Controller
- b. MSM765 zL Controller
- c. MSM720 Controller

6. Match the description below to the appropriate HP MSM Controller;

- Ships as an appliance that can manage up to 200 APs and supports an additional Premium Mobility license

- a. MSM760 Controller
- b. MSM765 zL Controller

c. MSM720 Controller

7. What are enhancements that were introduced with 802.11n? (Select three.)
- a. Beamforming
 - b. Request to Send (RTS)/Clear to Send (CTS)
 - c. Channel bonding
 - d. Multiple-input multiple output (MIMO)
 - e. Carrier sense multiple access with collision avoidance (CSMA/CA)
 - f. Dynamic Frequency Selection (DFS)

Answers

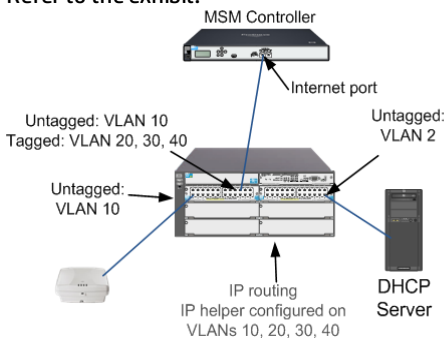
This section provides answers to and references for the sample questions.

1. You have enabled the Use Controller for Access Control feature on a Virtual Service Community (VSC) on a standalone HP MSM765 zl Mobility Controller. The VSC is also set to always tunnel traffic. How do clients that connect to this VSC receive IP addresses, and what role does the controller take in the solution?
- a. Clients must receive IP addresses from a network DHCP server, and the controller is not involved in the DHCP processes.
 - b. Clients can receive IP addresses from a network DHCP server or the controller's internal DHCP server, and you must configure DHCP services or relay services on the controller.
 - c. Clients must receive IP addresses from a network DHCP server, and you must configure DHCP relay services on the controller.
 - d. Clients must receive IP addresses from the controller internal DHCP server, which is configured on the controller.

References

Implementing HP MSM Wireless Networks, Module 5, pages 5-10 to 5-12

2. Refer to the exhibit.



MSM APs

The HP MSM760 Access Controller shown in the exhibit is operating at its default discovery settings. Which action must you take to enable the controller to discover the AP shown in the exhibit?

- a. Enable AP discovery globally on the controller.
- b. Enable Layer 3 discovery on the controller and configure the correct option on your DHCP server.
- c. Enable discovery on the controller's Internet port.
- d. Configure VLANs on the controller to match the VLANs on the switch port.

References

Implementing HP MSM Wireless Networks, Module 2, pages 2-52 to 2-60

3. You have enabled the Use Controller for Access Control feature on a VSC on a team of HP MSM765 zl Mobility Controllers. The VSC is also set to always tunnel traffic. How do clients that connect to this VSC receive IP addresses, and what role do the controllers take in the solution?
- a. Clients must receive IP addresses from a network DHCP server, and the team is not involved in the DHCP processes.
 - b. Clients can receive IP addresses from a network DHCP server or the controller's internal DHCP server, and you must configure DHCP services or relay services on the team.

- c. Clients must receive IP addresses from a network DHCP server, and you must configure DHCP relay services on the team.
- d. Clients must receive IP addresses from controller's internal DHCP servers, which are configured on the team.

References

Implementing HP MSM Wireless Networks, Module 5, pages 5-10 to 5-16

4. Match the description below to the appropriate HP MSM Controller;
- Ships with a Premium Mobility license

- a. MSM760 Controller
- b. MSM765 zl Controller
- c. MSM720 Controller

References

Implementing HP MSM Wireless Networks, Module 5, pages 5-10 to 5-12

5. Match the description below to the appropriate HP MSM Controller;
- Offers multiple ports that can be configured in aggregated links

- a. MSM760 Controller
- b. MSM765 zl Controller
- c. MSM720 Controller

References

Implementing HP MSM Wireless Networks, Module 5, pages 5-10 to 5-12

6. Match the description below to the appropriate HP MSM Controller;
- Ships as an appliance that can manage up to 200 APs and supports an additional Premium Mobility license

- a. MSM760 Controller
- b. MSM765 zl Controller
- c. MSM720 Controller

References

Implementing HP MSM Wireless Networks, Module 5, pages 5-10 to 5-12

7. What are enhancements that were introduced with 802.11n? (Select three.)

- a. Beamforming
- b. Request to Send (RTS)/Clear to Send (CTS)
- c. Channel bonding
- d. Multiple-input multiple output (MIMO)
- e. Carrier sense multiple access with collision avoidance (CSMA/CA)
- f. Dynamic Frequency Selection (DFS)

References

Implementing HP MSM Wireless Networks, Module 3, pages 3-12 to 3-22

For more information

HP ExpertOne: www.hp.com/go/ExpertOne-ContactUs

© Copyright 2014 Hewlett-Packard Development Company, L.P. The information contained herein is subject to change without notice. The only warranties for HP products and services are set forth in the express warranty statements accompanying such products and services. Nothing herein should be construed as constituting an additional warranty. HP shall not be liable for technical or editorial errors or omissions contained herein.

Created January 2014, Rev. 1